



# UniFi® | SWITCH

Managed Gigabit Switches with SFP

Models: US-24, US-48

Non-Blocking Throughput Switching Performance

Gigabit Ethernet RJ45 Ports

SFP+/SFP Fiber Connectivity Options



# UniFi® SWITCH

## Overview

Build and expand your network with Ubiquiti Networks® UniFi® Switch, part of the UniFi line of products.

Available with 24 or 48 RJ45 Gigabit ports, the UniFi Switch is a fully managed Gigabit switch, delivering robust performance and intelligent switching for your growing networks.

## Switching Performance

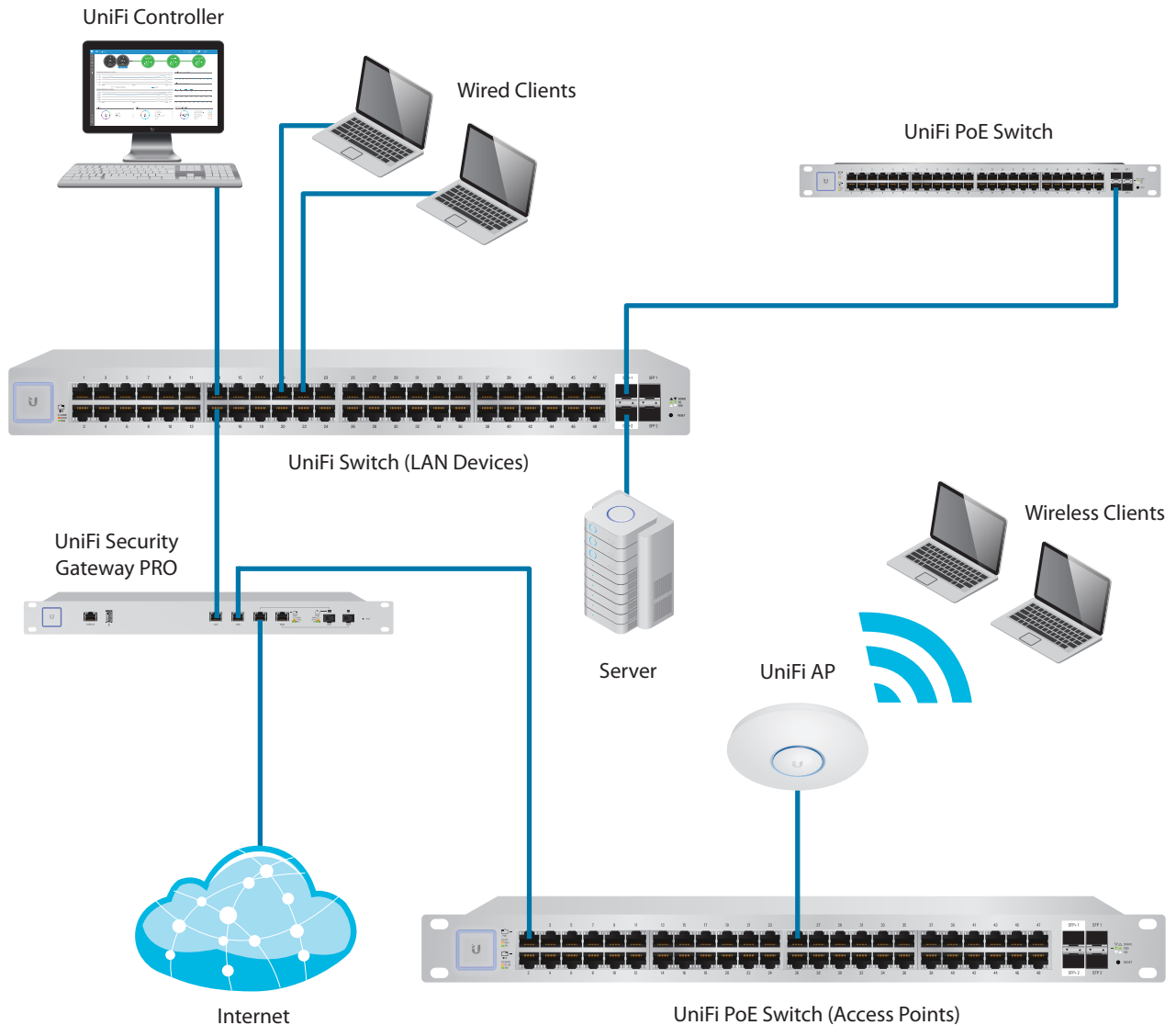
The UniFi Switch offers the forwarding capacity to simultaneously process traffic on all ports at line rate without any packet loss.

For its total, non-blocking throughput, the 24-port model supports up to 26 Gbps, while the 48-port model supports up to 70 Gbps.

## Fiber Connectivity

Each model includes two SFP ports for uplinks of up to 1 Gbps.

The 48-port model adds two SFP+ ports for high-capacity uplinks of up to 10 Gbps, so you can directly connect to a high-performance storage server or deploy a long-distance uplink to another switch.



# UniFi Controller

Designed for convenient management, the UniFi Controller software allows admins to configure and monitor the UniFi Switch and other UniFi devices using a graphical user interface. You can download it from [www.ubnt.com](http://www.ubnt.com) at no extra charge – there is no separate software, licensing, or support fee.

## Multi-Site Management

A single instance of the UniFi Controller running in the cloud can manage multiple UniFi sites within a centralized interface. Each site is logically separated and has its own network monitoring, configuration, maps, statistics, and admin accounts.

## Switch Configuration

You can access any managed UniFi Switch through the UniFi Controller to configure a variety of features:

- Operation mode (switching, mirroring, or aggregate) per port
- Network/VLAN configuration
- Jumbo frame and flow control services
- Network settings
- Storm control setting per port
- Spanning tree configuration
- 802.1x control and RADIUS VLAN
- Debug terminal option for command-line interface

## Switch Port Status

You can also view status information for each port:

- Connection speed and duplex mode
- TX/RX data rates
- Network/VLAN setting



## Dashboard

The *Dashboard* tab provides a visual representation of your network's status. Basic information is provided for each network segment.

DEVICE NAME	IP ADDRESS	STATUS	MODEL	VERSION	UPTIME	ACTIONS
Back USG-Pro-4	192.168.1.1	Connected	UniFi Security Gateway 4P	4.3.11.4882827	3d 15m 41s	Locate
Wksp- US-14-150W	192.168.1.232	Connected	UniFi Switch 14 PoE 150W	3.5.1.4088	10d 18m 45m 7s	Locate
Downstairs US-48-300W	192.168.1.191	Connected	UniFi Switch 48 PoE 300W	3.5.1.4088	4d 21m 15m 13s	Locate
Workshop US-48	192.168.1.244	Connected	UniFi Switch 48 PoE	3.5.1.4088	3d 21m 12m 13s	Locate
Back US-48-750W				3.5.1.4088	4d 21m 15m 21s	Locate
FrontPanel US-6-150W				3.5.1.4088	1d 8m 55m 17s	Locate
AC-Broadcast				3.5.1.4088	4d 21m 13m 4s	Locate
AC-LITE				3.5.1.3513	3d 21m 17m 32s	Locate
AC-LA-Broadcast				3.5.1.3513	4d 21m 15m 4s	Locate
44df67020433		DISABLED		3.5.1.3513	3d 21m 15m 32s	Locate
44df67020444		DISCONNECTED		3.5.1.3513	3d 19m 26m 8s	Locate
AC-Pro-Broadcast				3.5.1.3513	4d 21m 13m 31s	Locate
44df67094289				3.5.1.3513	9d 17m 17m 44s	Locate
Proseper1 LAP-AC-Pro				3.5.1.3513	1d 8m 32s	Locate
AC-Pro-Coverage				3.5.1.3513	3d 21m 17m 34s	Locate
Trunk1				3.5.1.4088	1d 8m 3m 34s	Locate
Living				3.5.1.4088	1d 8m 3m 36s	Locate
String				3.5.1.4088	1d 8m 3m 38s	Locate
Master				3.5.1.4088	1d 8m 3m 38s	Locate
Lift				3.5.1.4088	1d 8m 3m 35s	Locate
Basement				3.5.1.4088	1d 8m 3m 21s	Locate
24p43c3431af				3.5.1.4088	3d 17m 22m 34s	Locate
Pro-Access2	192.168.1.144	Connected	UniFi AP-Pro	3.5.1.4088	1d 8m 20m 25s	Locate
Pro-Access1	192.168.1.141	Connected	UniFi AP-Pro	3.5.1.4088	3d 21m 18m 41s	Locate

**Workshop US-48** Details:

- Model: UniFi Switch 48 PoE- Version: 3.5.1.4088- IP Address: 192.168.1.244- Power Consumption: 2.51W- Temperature: 59°C- Fan Level: 0- Uplink: 43d 22m 2m 32s

## Device Configuration

The *Devices* screen displays the UniFi devices discovered by the UniFi Controller. You can access each managed device for device details and configuration.



## Models

### UniFi® SWITCH 24

#### Model: US-24

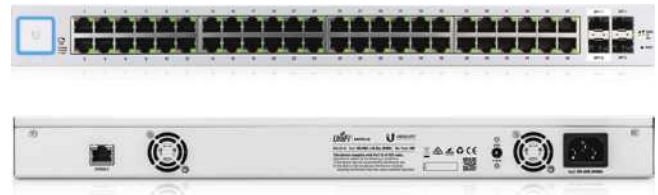
- (24) Gigabit RJ45 Ports
- (2) SFP Ports
- (1) Serial Console Port
- Non-Blocking Throughput: 26 Gbps
- Switching Capacity: 52 Gbps
- Forwarding Rate: 38.69 Mpps
- Maximum Power Consumption: 25W
- Rack-Mountable



### UniFi® SWITCH 48

#### Model: US-48

- (48) Gigabit RJ45 Ports
- (2) SFP+ Ports
- (2) SFP Ports
- (1) Serial Console Port
- Non-Blocking Throughput: 70 Gbps
- Switching Capacity: 140 Gbps
- Forwarding Rate: 104.16 Mpps
- Maximum Power Consumption: 56W
- Rack-Mountable



## Model Comparison Chart

	US-8-150W	US-16-150W	US-24	US-24-250W US-24-500W	US-48	US-48-500W US-48-750W
Gigabit RJ45 Ports	8	16	24	24	48	48
SFP Ports	2	2	2	2	2	2
SFP+ Ports					2	2
802.3af/at PoE+	✓	✓		✓		✓
24V Passive PoE	✓	✓		✓		✓
Sound Level* (dBr)	0.5 (fanless)	1.7-10.8	1.6-9.2	9.1-21.2 9.3-21.6	0.7-13.5	10.7-23.6 12.1-24.7

\* Background noise level: 27.5 dBA

# Hardware Specifications

US-24		
Dimensions	443 x 43 x 221 mm (17.44 x 1.69 x 8.70")	
Weight	Rack-Mount Brackets Excluded	Rack-Mount Brackets Included
	2.51 kg (5.53 lb)	2.60 kg (5.70 lb)
Networking Interfaces	(24) 10/100/1000 Mbps RJ45 Ethernet Ports (2) 1 Gbps SFP Ethernet Ports	
Management Interface	(1) RJ45 Serial Port Out-of-Band, Ethernet In-Band	
Total Non-Blocking Throughput	26 Gbps	
Switching Capacity	52 Gbps	
Forwarding Rate	38.69 Mpps	
Power Method	100-240VAC/50-60 Hz, Universal Input	
Power Supply	AC/DC, Internal, 25W DC	
Max. Power Consumption	25W	
LEDs per Port	Speed/Link/Activity	
Sound Level*	Fan Level: 0	Fan Level: 1
	1.6 dBr	9.2 dBr
ESD/EMP Protection	Air: ± 24 kV, Contact: ± 24 kV	
Rack Mount	Yes, 1U High	
Shock and Vibration	ETSI300-019-1.4 Standard	
Operating Temperature	-5 to 40° C (23 to 104° F)	
Operating Humidity	5 to 95% Noncondensing	
Certifications	CE, FCC, IC	

\* Background noise level: 27.5 dBa

# Hardware Specifications

US-48		
Dimensions	443 x 43 x 286 mm (17.44 x 1.69 x 11.26")	
Weight	Rack-Mount Brackets Excluded	Rack-Mount Brackets Included
	3.56 kg (7.85 lb)	3.65 kg (8.06 lb)
Networking Interfaces	(48) 10/100/1000 Mbps RJ45 Ethernet Ports (2) 1/10 Gbps SFP+ Ethernet Ports (2) 1 Gbps SFP Ethernet Ports	
Management Interface	(1) RJ45 Serial Port Out-of-Band, Ethernet In-Band	
Total Non-Blocking Throughput	70 Gbps	
Switching Capacity	140 Gbps	
Forwarding Rate	104.16 Mpps	
Power Method	100-240VAC/50-60 Hz, Universal Input	
Power Supply	AC/DC, Internal, 56W DC	
Max. Power Consumption	56W	
LEDs per Port	Speed/Link/Activity	
Sound Level*	Fan Level: 0	Fan Level: 1
	0.7 dBr	13.5 dBr
ESD/EMP Protection	Air: ± 24 kV, Contact: ± 24 kV	
Rack Mount	Yes, 1U High	
Shock and Vibration	ETSI300-019-1.4 Standard	
Operating Temperature	-5 to 40° C (23 to 104° F)	
Operating Humidity	5 to 95% Noncondensing	
Certifications	CE, FCC, IC	

\* Background noise level: 27.5 dBa