



## Advanced Network Routers

Sophisticated Routing Features

Advanced Security, Monitoring, and Management

High-Performance Gigabit Ports



## Overview

Ubiquiti introduces five new routers for the EdgeMAX® platform:

- EdgeRouter™ 12P
- EdgeRouter 12
- EdgeRouter 10X
- EdgeRouter 6P
- EdgeRouter 4

They join the array of cost-effective Gigabit routers:

- 8-Port EdgeRouter Pro
- 8-Port EdgeRouter
- 5-Port EdgeRouter PoE
- 3-Port EdgeRouter Lite

## High Performance

The EdgeRouters offers superior routing combined with top price/performance value for your routing applications.

The EdgeRouter 4, 6P, 12, and 12P are each capable of routing up to 3.4 million packets per second.

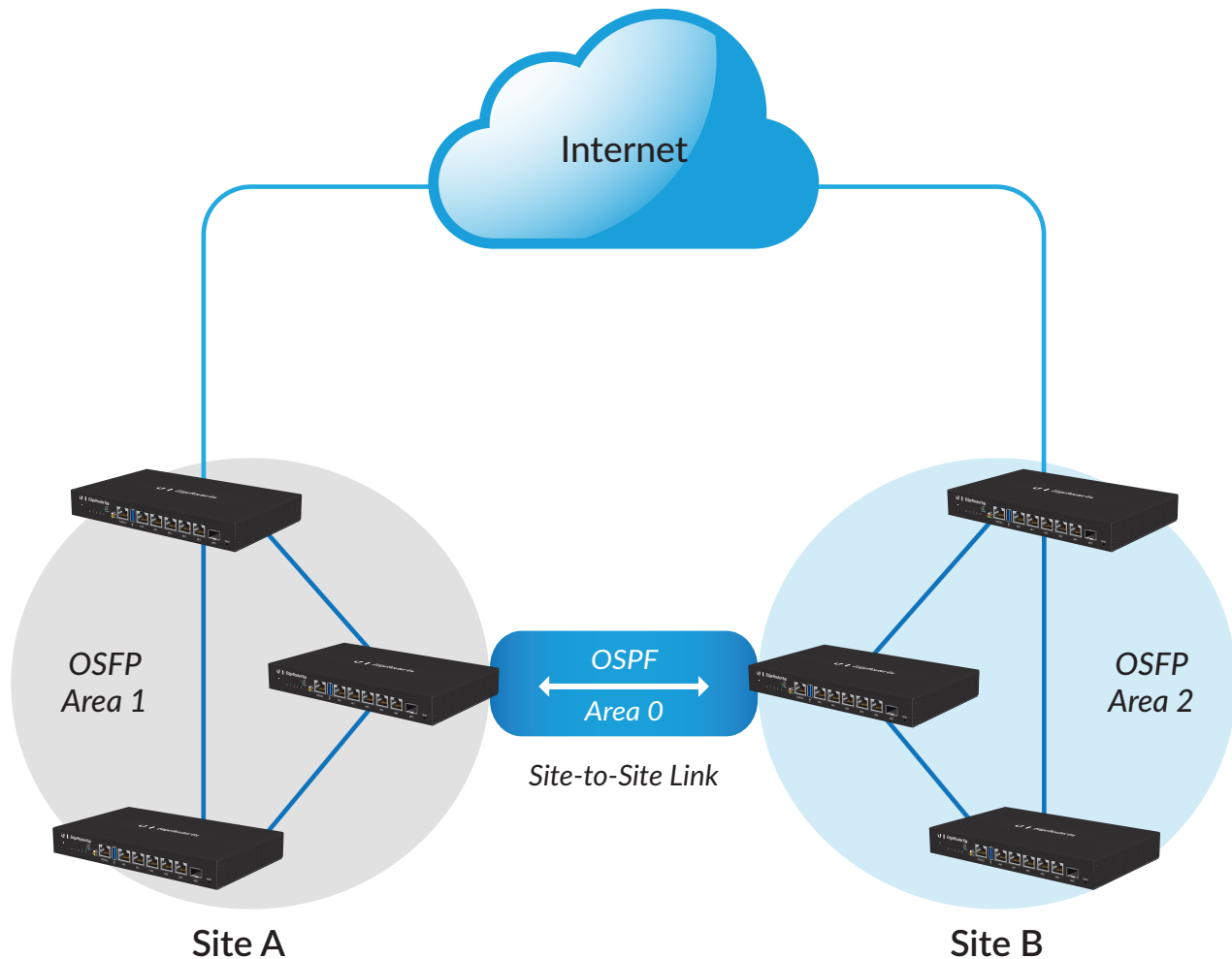
The 8-Port EdgeRouter and EdgeRouter Pro route up to 2 million+ packets per second, while the EdgeRouter Lite and EdgeRouter PoE route up to 1 million packets per second.

## PoE Flexibility

The EdgeRouter 6P, PoE, and 12P include configurable PoE ports to power airMAX® products, and the EdgeRouter 12 has a PoE input port and a PoE passthrough port.

## Fiber Connectivity

The EdgeRouter 4 and EdgeRouter 6P provide an SFP port. The EdgeRouter 12 and 12P feature dual SFP ports, while the 8-Port EdgeRouter offers two combination RJ45/SFP ports.



*Typical Service Provider Deployment*

## Manage Your Network

**DHCP Server** Set up multiple DHCP servers to assign IP ranges in different subnets on the different interfaces.

Easily control dynamic and static IP addressing for your network devices.

**Monitoring Tools** Conveniently track network activity and devices from tools such as *Ping*, *Trace*, *Discover*, *Packet Capture*, and *Log Monitor*.

## Secure Your Network

**Firewall Policies** Organize the rules you apply in the order you specify.

**Firewall Groups** Apply the policies to groups filtered by IP address, network address, or port number.

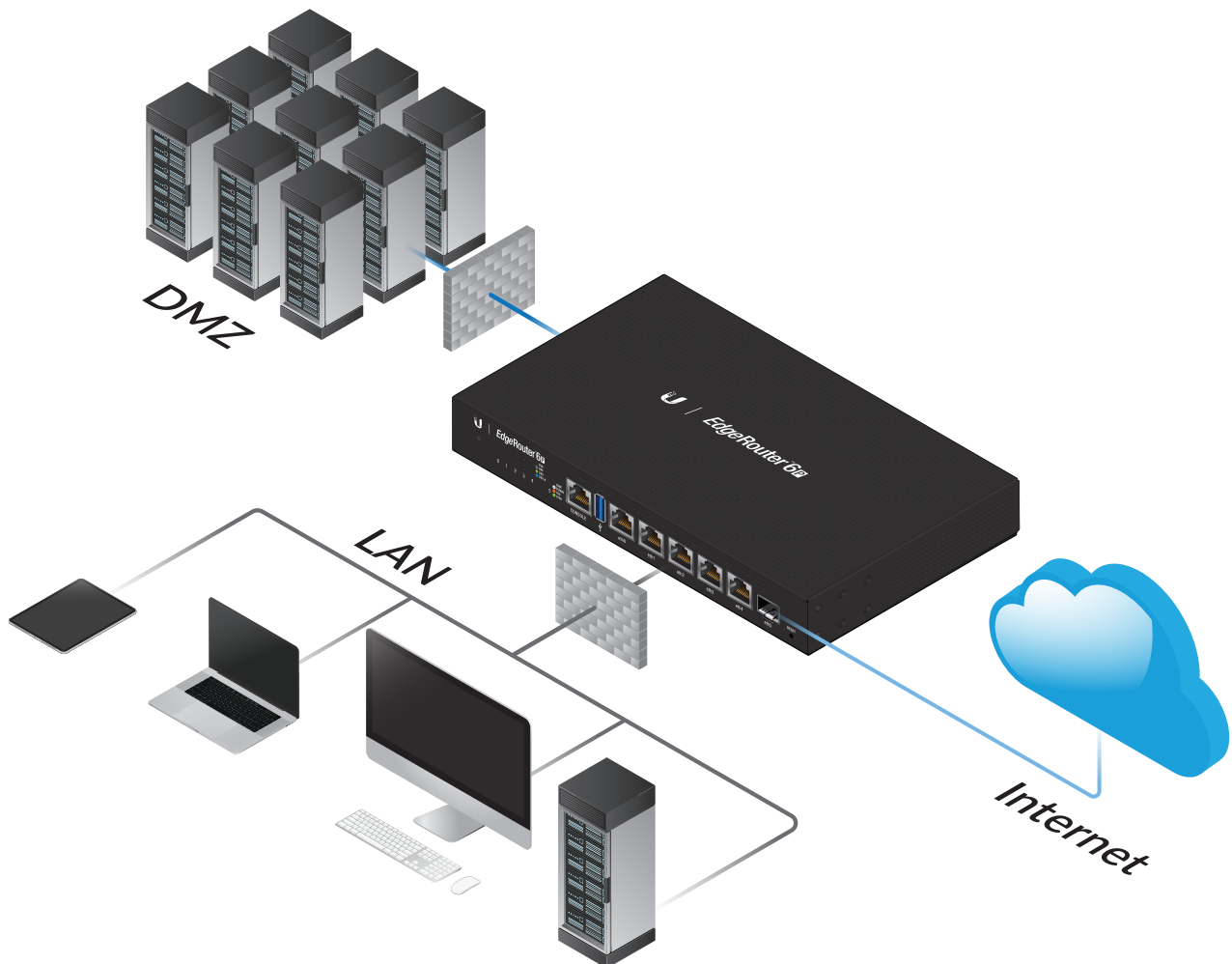
**NAT Rules** The EdgeRouter changes packet addressing based on your customized source and destination NAT rules.

## Direct Traffic Flow

**Interfaces** Each port functions as an independent interface.

You can also configure Virtual Local Area Network (VLAN) interfaces for network segmentation.

**Routing** Configure static routes and dynamic routing protocols to effectively manage the routes used by the EdgeRouter.



*Example of Enterprise Deployment with SFP Connection to the Internet*

## Software

### Intuitive User Interface

The EdgeRouter provides a graphical user interface designed for convenient setup and control. Easily configure the routing, security, and management features required to efficiently run your network. For advanced network professionals, an integrated CLI is available for quick and direct access using familiar commands.

Even greater convenience and flexibility is provided by the UNMS™ app, which makes it possible to manage the EdgeRouter remotely from your mobile device.

### Powerful Features

EdgeOS® is a sophisticated operating system loaded with robust features, including:

- VLAN interfaces for network segmentation
- Static routes and support of routing protocols: OSPF, RIP, BGP, and MPLS
- Firewall policies and NAT rules
- Application identification with Deep Packet Inspection (DPI)
- DHCP services
- Quality of Service (QoS)
- Network administration and monitoring tools
- Administrator and operator accounts
- Comprehensive IPv6 support

### Configuration by CLI

The CLI provides quick and flexible configuration by command line and features the following:

- For power users, configuration and monitoring of all advanced features
- Direct access to standard Linux tools and shell commands
- CLI access through the following:
  - Serial console port
  - SSH
  - Telnet
  - Graphical user interface



The Dashboard screen displays detailed statistics: IP information, MTU, transmit and receive speeds, and status for each interface.



The Traffic Analysis screen displays status information about the traffic traveling through the EdgeRouter, including the local hosts and types of network traffic.



The Routing > Routes screen displays static, connected, RIP, and/or OSPF routes. You can add static routes on this screen.



## Management Flexibility

In addition to the EdgeOS software, the EdgeRouter provides the following options for convenient management.

### Centralized Control

The EdgeRouter is supported and managed by the Ubiquiti® Network Management System. UNMS™ is a comprehensive management controller featuring a graphic UI that is easy to navigate. You can use a single control plane to manage registered EdgeMAX devices across multiple networks and sites.

### Mobile App

The UNMS app allows you to manage the EdgeRouter using your mobile device. The app can be downloaded from the App Store® (iOS) or Google Play™ (Android).

Once the UNMS app is installed on your mobile device, simply connect to a wireless network that has access to the EdgeRouter, discover the EdgeRouter, and log into its configuration interface.

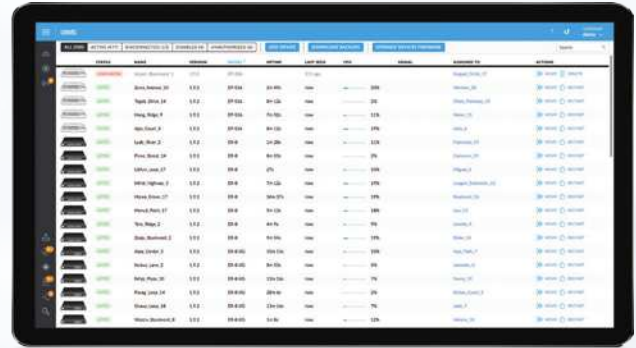
You can display and configure various settings, such as interface information, throughput per port, system settings, and more.

### Optional Rack Mount

You can use the EdgeRouter Rack Mount Kit to mount the following models in a standard 1U high rack.

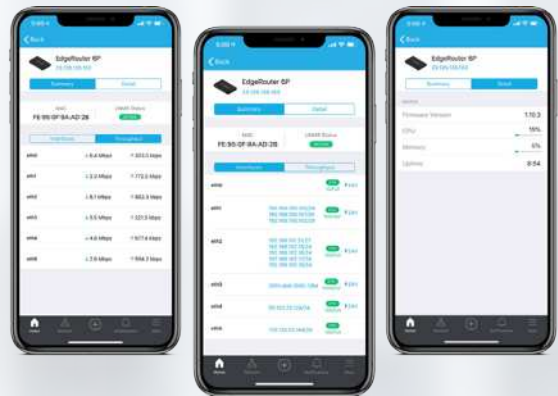
- EdgeRouter 12P
- EdgeRouter 12
- EdgeRouter 10X
- EdgeRouter 6P
- EdgeRouter 4

## Ubiquiti Network Management System



Use UNMS to register and manage multiple EdgeMAX devices

## UNMS Mobile App



UNMS app to manage EdgeRouter using a mobile device

## Rack Mount Kit



Model: ER-RMKIT

## EdgeRouter 12P

- (10) Gigabit RJ45 routing ports
- 24V PoE support on RJ45 ports
- Ports 0-7 can be configured for line-rate Layer 2 switching
- (2) Gigabit SFP ports
- 3.4 million packets per second for 64-byte packets
- 6.8 Gbps for packets 1518 bytes or larger in size
- Silent, fanless operation
- Compact, durable metal case



ER-12P

## EdgeRouter 12

- (10) Gigabit RJ45 routing ports
- 24V PoE input on port 0
- 24V PoE passthrough option on port 9
- Ports 0-7 can be configured for line-rate Layer 2 switching
- (2) Gigabit SFP ports
- 3.4 million packets per second for 64-byte packets
- 6.8 Gbps for packets 1518 bytes or larger in size
- Silent, fanless operation
- Compact, durable metal case



ER-12

## EdgeRouter 10X

- (10) Gigabit RJ45 routing ports
- 24V PoE input on port 0
- 24V PoE passthrough option on port 9
- Ports 0-9 can be configured for line-rate Layer 2 switching
- 260,000 packets per second for 64-byte packets
- 1 Gbps for packets 1518 bytes or larger in size
- Silent, fanless operation
- Compact, durable metal case



ER-10X

## EdgeRouter PRO

- (6) Gigabit routing ports
- (2) Gigabit RJ45/SFP combination ports
- 2 million+ packets per second for 64-byte packets
- 8 Gbps for packets 512 bytes or larger in size
- Rackmountable

## 8-Port EdgeRouter

- (8) Gigabit routing ports
- 2 million packets per second for 64-byte packets
- 8 Gbps for packets 512 bytes or larger in size
- Rackmountable



ER-8 (Top), ERPro-8 (Bottom)

## EdgeRouter 6P

- (5) Gigabit RJ45 routing ports
- 24V PoE support on RJ45 ports
- (1) Gigabit SFP port
- 3.4 million packets per second for 64-byte packets
- 6 Gbps for packets 256 bytes or larger in size
- Silent, fanless operation
- Compact, durable metal case



ER-6P



ERPoe-5

## EdgeRouter PoE

- (5) Gigabit routing ports
- (5) PoE configurable ports
- Supports 24V or 48V PoE
- (3) ports configurable for switching
- 1 million packets per second for 64-byte packets

## EdgeRouter 4

- (3) Gigabit RJ45 routing ports
- (1) Gigabit SFP port
- 3.4 million packets per second for 64-byte packets
- 4 Gbps for packets 128 bytes or larger in size
- Silent, fanless operation
- Compact, durable metal case



ER-4



ERLite-3

## EdgeRouter Lite

- (3) Gigabit routing ports
- 1 million packets per second for 64-byte packets
- Silent, fanless operation
- Compact, durable metal case

| EdgeRouter 12P (Model: ER-12P)    |  |
|-----------------------------------|--|
| Dimensions                        | 268.1 x 136.5 x 31.1 mm (10.55 x 5.37 x 1.22")   |
| Weight                            | 700 g (1.54 lb)  |
| Max. Power Consumption            | 20W (Excludes PoE Output)  |
| Power Method                      | External AC/DC Power Adapter, 60W (24V, 2.5A) (Included)   |
| Power Supply                      | External AC/DC Adapter   |
| Supported Voltage Range           | 9 - 30VDC  |
| Button                            | Reset  |
| LEDs                              |  |
| Data Ports                        | Speed/Link/Activity, PoE   |
| SFP Data Port                     | Link/Activity  |
| Networking Interfaces Management  | (1) RJ45 Serial Port   |
| Networking                        | (10) Ethernet Ports (Default Port 0)<br>(10) 10/100/1000 RJ45 Ports with PoE<br>(2) 1 Gbps SFP Ports |
| Layer 3 Forwarding Performance    |  |
| Packet Size: 64 Bytes             | 3,400,000 pps  |
| Packet Size: 1518 Bytes or Larger | 6.8 Gbps (Line Rate)   |
| Processor                         | 4-Core 1 GHz, MIPS64   |
| System Memory                     | 1 GB DDR3 RAM  |
| On-Board Flash Storage            | 4 GB eMMC, 8 MB SPI NOR  |
| Mounting                          | Wall, Rack*  |
| Operating Temperature             | -10 to 40° C (14 to 104° F)  |
| Operating Humidity                | 10 - 90% Noncondensing   |
| Certifications                    | CE, FCC, IC  |

\* With optional Rack Mount Kit, model ER-RMKIT

| PoE with 24VDC Power Adapter      |   |
|-----------------------------------|---|
| PoE Interfaces                    | (10) 24V Passive PoE Ports, 2-pair (4, 5+; 7, 8-) |
| Passive PoE Max. Wattage Per Port | 17W (24V)   |
| Voltage Range Passive PoE         | 24V: 20 to 30V                                    |





| EdgeRouter 12 (Model: ER-12)      |  |
|-----------------------------------|--|
| Dimensions                        | 268.1 x 136.5 x 31.1 mm (10.55 x 5.37 x 1.22")                               |
| Weight                            | 700 g (1.54 lb)  |
| Max. Power Consumption            | 20W (Excludes PoE Output)  |
| Power Method                      | External AC/DC Power Adapter, 24W<br>(24V, 1A) (Included)<br>24V Passive PoE |
| Power Supply                      | External AC/DC Adapter   |
| Supported Voltage Range           | DC 9 - 30VDC<br>24V Passive PoE 20 - 30V                                     |
| Button                            | Reset  |
| LEDs                              | Speed/Link/Activity, PoE (Port 9 Only)<br>Link/Activity                      |
| Networking Interfaces             | (1) RJ45 Serial Port<br>(10) Ethernet Ports (Default Port 0)                 |
| Management                        | (10) 10/100/1000 RJ45 Ports<br>(2) 1 Gbps SFP Ports                          |
| Networking                        |  |
| Layer 3 Forwarding Performance    | 3,400,000 pps<br>6.8 Gbps (Line Rate)  |
| Packet Size: 64 Bytes             |  |
| Packet Size: 1518 Bytes or Larger |  |
| Processor                         | 4-Core 1 GHz, MIPS64   |
| System Memory                     | 1 GB DDR3 RAM  |
| On-Board Flash Storage            | 4 GB eMMC, 8 MB SPI NOR  |
| Mounting                          | Wall, Rack*  |
| Operating Temperature             | -10 to 50° C (14 to 122° F)  |
| Operating Humidity                | 10 - 90% Noncondensing   |
| Certifications                    | CE, FCC, IC  |

\* With optional Rack Mount Kit, model ER-RMKIT

| PoE                               |   |
|-----------------------------------|---|
| PoE Interfaces                    |   |
| PoE In                            | (1) 24V Passive PoE Port, 2-pair (4, 5+; 7, 8-) |
| PoE Out                           | (1) 24V Passive PoE Port, 2-pair (4, 5+; 7, 8-) |
| Passive PoE Max. Wattage Per Port | 20W (24V, 0.83A)                                |
| Passive PoE Output                | DC/PoE Passthrough                              |



| EdgeRouter 10X (Model: ER-10X)    |  |
|-----------------------------------|--|
| Dimensions                        | 268.1 x 136.5 x 31.1 mm (10.55 x 5.37 x 1.22")                               |
| Weight                            | 600 g (1.32 lb)  |
| Max. Power Consumption            | 8W (Excludes PoE Output)   |
| Power Method                      | External AC/DC Power Adapter, 24W<br>(24V, 1A) (Included)<br>24V Passive PoE |
| Power Supply                      | External AC/DC Adapter   |
| Supported Voltage Range           |  |
| DC                                | 9 - 30VDC  |
| 24V Passive PoE                   | 20 - 30V   |
| Button                            | Reset  |
| LEDs                              |  |
| Data Ports                        | Link/Activity, PoE (Port 9 Only)   |
| Interfaces                        |  |
| Management                        | (1) RJ45 Serial Port   |
| Networking                        | (10) Ethernet Ports (Default Port 0)<br>(10) 10/100/1000 RJ45 Ports          |
| Layer 3 Forwarding Performance    |  |
| Packet Size: 64 Bytes             | 260,000 pps  |
| Packet Size: 1518 Bytes or Larger | 1 Gbps (Line Rate)   |
| Processor                         | Dual-Core 880 MHz, MIPS1004Kc  |
| System Memory                     | 512 MB DDR3 RAM  |
| On-Board Flash Storage            | 512 MB NAND  |
| Mounting                          | Wall, Rack*  |
| Operating Temperature             | -10 to 45° C (14 to 113° F)  |
| Operating Humidity                | 10 - 90% Noncondensing   |
| Certifications                    | CE, FCC, IC  |

\* With optional Rack Mount Kit, model ER-RMKIT

| PoE                               |   |
|-----------------------------------|---|
| PoE Interfaces                    |   |
| PoE In                            | (1) 24V Passive PoE Port, 2-pair (4, 5+; 7, 8-) |
| PoE Out                           | (1) 24V Passive PoE Port, 2-pair (4, 5+; 7, 8-) |
| Passive PoE Max. Wattage Per Port | 15W (24V, 0.63A)                                |
| Passive PoE Output                | DC/PoE Passthrough                              |



| EdgeRouter Pro (Model: ERPro-8)   |  |
|---|--|
| Dimensions  | 484 x 164 x 44 mm (19.06 x 6.46 x 1.73 in)   |
| Weight  | 2.3 kg (5.07 lb)   |
| Max. Power Consumption  | 40 W   |
| Power Method  | Universal AC Power Cord (C5)   |
| Power Supply  | Internal AC/DC Power Adapter, 60W (24V, 2.5A)  |
| Supported Voltage Range   | 100 - 240VAC, 50/60 Hz   |
| Button  | Reset  |
| LEDs Per Data Port  | Speed/Link/Activity  |
| Networking Interfaces<br>Serial Console Port<br>Data Ports                                  | (1) RJ45 Serial Port<br>(6) 10/100/1000 RJ45 Ports<br>(2) 10/100/1000 RJ45/SFP Combination Ports |
| Layer 3 Forwarding Performance<br>Packet Size: 64 Bytes<br>Packet Size: 512 Bytes or Larger | 2,400,000 pps<br>8 Gbps (Line Rate)  |
| Processor   | Dual-Core 1 GHz, MIPS64 with Hardware Acceleration for Packet Processing                         |
| System Memory   | 2 GB DDR3 RAM  |
| On-Board Flash Storage  | 4 GB   |
| Mounting  | Rack   |
| Operating Temperature   | -10 to 45° C (14 to 113° F)  |
| Operating Humidity  | 10 - 90% Noncondensing   |
| Certifications  | CE, FCC, IC  |



| 8-Port EdgeRouter (Model: ER-8)   |  |
|---|--|
| Dimensions  | 484 x 164 x 44 mm (19.06 x 6.46 x 1.73 in)                                 |
| Weight  | 2.3 kg (5.07 lb)   |
| Max. Power Consumption  | 35 W   |
| Power Method  | Universal AC Power Cord (C5)   |
| Power Supply  | Internal AC/DC Power Adapter, 60W (24V, 2.5A)                              |
| Supported Voltage Range   | 100 - 240VAC, 50/60 Hz   |
| Button  | Reset  |
| LEDs Per Data Port  | Speed/Link/Activity  |
| Networking Interfaces<br>Serial Console Port<br>Data Ports                                  | (1) RJ45 Serial Port<br>(8) 10/100/1000 Ethernet Ports                     |
| Layer 3 Forwarding Performance<br>Packet Size: 64 Bytes<br>Packet Size: 512 Bytes or Larger | 2,000,000 pps<br>8 Gbps (Line Rate)  |
| Processor   | Dual-Core 800 MHz, MIPS64 with Hardware Acceleration for Packet Processing |
| System Memory   | 2 GB DDR3 RAM  |
| On-Board Flash Storage  | 4 GB   |
| Mounting  | Rack   |
| Operating Temperature   | -10 to 45° C (14 to 113° F)  |
| Operating Humidity  | 10 - 90% Noncondensing   |
| Certifications  | CE, FCC, IC  |



| EdgeRouter 6P (Model: ER-6P)     |   |
|----------------------------------|---|
| Dimensions                       | 229 x 136.5 x 31.1 mm (9.02 x 5.37 x 1.22")   |
| Weight                           | 730 g (1.61 lb)   |
| Max. Power Consumption           | 16W (Excludes PoE Output)   |
| Power Method                     | External AC/DC Power Adapter, 60W (24V, 2.5A) (Included)  |
| Power Supply                     | External AC/DC Adapter  |
| Supported Voltage Range          | 16 - 30VDC  |
| Button                           | Reset   |
| LEDs                             |   |
| Data Ports                       | Speed/Link/Activity, PoE  |
| SFP Data Port                    | Link/Activity   |
| Interfaces                       |   |
| Management                       | (1) RJ45 Serial Port  |
| Networking                       | (6) Ethernet Ports (Default eth0)<br>(5) 10/100/1000 RJ45 Ports with PoE<br>(1) 1 Gbps SFP Port |
| Layer 3 Forwarding Performance   |   |
| Packet Size: 64 Bytes            | 3,400,000 pps   |
| Packet Size: 512 Bytes or Larger | 6 Gbps (Line Rate)  |
| Processor                        | 4-Core 1 GHz, MIPS64  |
| System Memory                    | 1 GB DDR3 RAM   |
| On-Board Flash Storage           | 4 GB eMMC, 8 MB SPI NOR   |
| Mounting                         | Wall, Rack*   |
| Operating Temperature            | -10 to 50° C (14 to 122° F)   |
| Operating Humidity               | 10 - 90% Noncondensing  |
| Certifications                   | CE, FCC, IC   |

\* With optional Rack Mount Kit, model ER-RMKIT

| PoE with 24VDC Power Adapter      |  |
|-----------------------------------|--|
| PoE Interfaces                    | (5) 24V Passive PoE Ports,<br>2-pair (4, 5+; 7, 8-) and 4-pair |
| Passive PoE Max. Wattage Per Port | 24W (24V, 1A, 4-pair)<br>12W (24V, 0.5A, 2-pair)               |
| Voltage Range Passive PoE         | 24V  |



| EdgeRouter PoE (Model: ERPoe-5)  |   |
|----------------------------------|---|
| Dimensions                       | 200 x 90 x 30 mm (7.87 x 3.54 x 1.18 in)  |
| Weight                           | 360 g (12.7 oz)   |
| Max. Power Consumption           | 60W   |
| Power Method                     | External AC/DC Power Adapter, 60W (48V, 1.25A) (Included)                             |
| Power Supply                     | External AC/DC Adapter  |
| Supported Voltage Range          | 38 - 54VDC  |
| Power Connector Size             | DC Power Jack, 2.1 mm<br>2.1 mm ID, 5.5 mm OD   |
| Button                           | Reset   |
| LEDs Per Port                    | Power   |
| Serial Console Port              | PoE, Speed/Link/Activity  |
| Data Ports                       |   |
| PoE Configurable Per Port        |   |
| Serial Console Port              | N/A   |
| Data Ports                       | Off/24V/48V   |
| Networking Interfaces            |   |
| Serial Console Port              | (1) RJ45 Serial Port  |
| Data Ports                       | (2) 10/100/1000 Ethernet Router Ports<br>(3) 10/100/1000 Ethernet Router/Switch Ports |
| Layer 3 Forwarding Performance   |   |
| Packet Size: 64 Bytes            | 1,000,000 pps   |
| Packet Size: 512 Bytes or Larger | 3 Gbps (Line Rate)  |
| Processor                        | Dual-Core 500 MHz, MIPS64 with<br>Hardware Acceleration for Packet Processing         |
| System Memory                    | 512 MB DDR2 RAM   |
| On-Board Flash Storage           | 2 GB  |
| Mounting                         | Wall  |
| Operating Temperature            | -10 to 45° C (14 to 113° F)   |
| Operating Humidity               | 10 - 90% Noncondensing  |
| Certifications                   | CE, FCC, IC   |



| PoE with 48VDC Power Adapter                   |                        |
|--|------------------------|
| PoE Out Voltage Range                          | 22-24VDC / 45-48VDC    |
| Max. PoE Wattage Per Data Port                 | 12 W (24V), 24 W (48V) |
| Max. PoE Wattage Combined for All 5 Data Ports | 50W                    |
| PoE Method                                     | Passive                |

| EdgeRouter 4 (Model: ER-4)       |  |
|----------------------------------|--|
| Dimensions                       | 229 x 136.5 x 31.1 mm (9.02 x 5.37 x 1.22")  |
| Weight                           | 795 g (1.75 lb)  |
| Max. Power Consumption           | 13W  |
| Power Method                     | Universal AC Power Cord (C13)  |
| Power Supply                     | Internal AC/DC Power Adapter, 30W DC   |
| Supported Voltage Range          | 100 - 240VAC, 50/60 Hz   |
| Button                           | Reset  |
| LEDs                             |  |
| Data Ports                       | Speed/Link/Activity  |
| SFP Data Port                    | Link/Activity  |
| Interfaces                       |  |
| Management                       | (1) RJ45 Serial Port   |
| Networking                       | (4) Ethernet Ports (Default eth0)<br>(3) 10/100/1000 RJ45 Ports<br>(1) 1 Gbps SFP Port |
| Layer 3 Forwarding Performance   |  |
| Packet Size: 64 Bytes            | 3,400,000 pps  |
| Packet Size: 512 Bytes or Larger | 4 Gbps (Line Rate)   |
| Processor                        | 4-Core 1 GHz, MIPS64   |
| System Memory                    | 1 GB DDR3 RAM  |
| On-Board Flash Storage           | 4 GB eMMC, 8 MB SPI NOR  |
| Mounting                         | Wall, Rack*  |
| Operating Temperature            | -10 to 50° C (14 to 122° F)  |
| Operating Humidity               | 10 - 90% Noncondensing   |
| Certifications                   | CE, FCC, IC  |

\* With optional Rack Mount Kit, model ER-RMKIT



| EdgeRouter Lite (Model: ERLite-3) |  |
|-----------------------------------|--|
| Dimensions                        | 200 x 90 x 30 mm (7.87 x 3.54 x 1.18 in)                                   |
| Weight                            | 345 g (12.17 oz)   |
| Power Method                      | External AC/DC Power Adapter, 12W (12V, 1A) (Included)                     |
| Power Supply                      | External AC/DC Adapter   |
| Supported Voltage Range           | 9 to 24VDC   |
| Button                            | Reset  |
| LEDs Per Port                     | Power  |
| Serial Console Port               | Speed/Link/Activity  |
| Data Ports                        |  |
| Networking Interfaces             |  |
| Serial Console Port               | (1) RJ45 Serial Port   |
| Data Ports                        | (3) 10/100/1000 Ethernet Ports   |
| Layer 3 Forwarding Performance    |  |
| Packet Size: 64 Bytes             | 1,000,000 pps  |
| Packet Size: 512 Bytes or Larger  | 3 Gbps (Line Rate)   |
| Processor                         | Dual-Core 500 MHz, MIPS64 with Hardware Acceleration for Packet Processing |
| System Memory                     | 512 MB DDR2 RAM  |
| On-Board Flash Storage            | 2 GB   |
| Mounting                          | Wall   |
| Operating Temperature             | -10 to 45° C (14 to 113° F)  |
| Operating Humidity                | 10 - 90% Noncondensing   |
| Certifications                    | CE, FCC, IC  |





| EdgeOS Software         |   |
|-------------------------|---|
| Interface/Encapsulation | Ethernet<br>802.1q VLAN<br>PPPoE<br>GRE<br>IP in IP<br>Bridging<br>Bonding (802.3ad)  |
| Addressing              | Static IPv4/IPv6 Addressing<br>DHCP/DHCPv6  |
| Routing                 | Static Routes<br>OSPF/OSPFv3<br>RIP/RIPng<br>BGP (with IPv6 Support)<br>IGMP Proxy<br>MPLS  |
| Security                | ACL-Based Firewall<br>Zone-Based Firewall<br>Application Identification with Deep Packet Inspection (DPI)<br>NAT  |
| VPN                     | IPSec Site-to-Site and Remote Access<br>OpenVPN Site-to-Site and Remote Access<br>PPTP Remote Access<br>L2TP Remote Access<br>PPTP Client                     |
| Services                | DHCP/DHCPv6 Server<br>DHCP/DHCPv6 Relay<br>Dynamic DNS<br>DNS Forwarding<br>VRRP<br>RADIUS Client<br>Web Caching<br>PPPoE Server                              |
| QoS                     | FIFO<br>Stochastic Fairness Queueing<br>Random Early Detection<br>Token Bucket Filter<br>Deficit Round Robin<br>Hierarchical Token Bucket<br>Ingress Policing |
| Management              | Web UI<br>Ubiquiti Network Management System (UNMS)<br>CLI (GUI, Console, SSH, Telnet)<br>SNMP<br>NetFlow<br>LLDP<br>NTP<br>UBNT Discovery Protocol<br>Syslog |



Specifications are subject to change. Ubiquiti products are sold with a limited warranty described at: [ui.com/support/warranty](http://ui.com/support/warranty)

The limited warranty requires the use of arbitration to resolve disputes on an individual basis, and, where applicable, specify arbitration instead of jury trials or class actions.

©2012-2020 Ubiquiti Inc. All rights reserved. Ubiquiti, Ubiquiti Networks, the Ubiquiti U logo, the Ubiquiti beam logo, airMAX, airOS, EdgeMAX, EdgeOS, EdgeRouter, and UNMS are trademarks or registered trademarks of Ubiquiti Inc. in the United States and in other countries. Apple and the Apple logo are trademarks of Apple Inc., registered in the U.S. and other countries. App Store is a service mark of Apple Inc., registered in the U.S. and other countries. Android, Google, Google Play, the Google Play logo and other marks are trademarks of Google LLC. All other trademarks are the property of their respective owners.

