



## *rocket<sup>®</sup>M*

Powerful 2x2 MIMO airMAX<sup>®</sup> BaseStation

Models: M5, M3, M365, M2, M900

Advanced Software Technology to Maximize Performance

---

Plug and Play Integration with airMAX Antennas

---

Frequency and Channel Flexibility



# Overview

Featuring mix-and-match industrial design, the Rocket® is a Ubiquiti Networks® airMAX® BaseStation that supports speeds of up to 150+ Mbps real TCP/IP throughput. It is ideal for deployment in Point-to-Point (PtP) bridging or Point-to-MultiPoint (PtMP) airMAX applications.

## Flexibility

The Rocket is available in several frequency models: 900 MHz, 2.4 GHz, 3/3.65 GHz, and 5 GHz, to support your specific application. You have the freedom to locate, deploy, and operate the Rocket in these unlicensed bands (subject to local country regulations).

The Rocket allows for a high degree of flexibility in configuring channel bandwidths: 2, 3, 5, 8, 10, 20, 25, 30, and/or 40 MHz, depending on the specific product model and local country regulations.

## Plug and Play Integration

Rocket radios and airMAX antennas have been designed to seamlessly work together. Every airMAX Sector, RocketDish™, Omni, or Yagi antenna has a built-in Rocket mount, so installation requires no special tools. Snap the Rocket securely into place and mount the antenna; then you have the optimal combination of Rocket radio and airMAX antenna for your PtP or PtMP application.

## airMAX Technology Included

Unlike standard Wi-Fi protocol, Ubiquiti's Time Division Multiple Access (TDMA) airMAX protocol allows each client to send and receive data using pre-designated time slots scheduled by an intelligent AP controller.

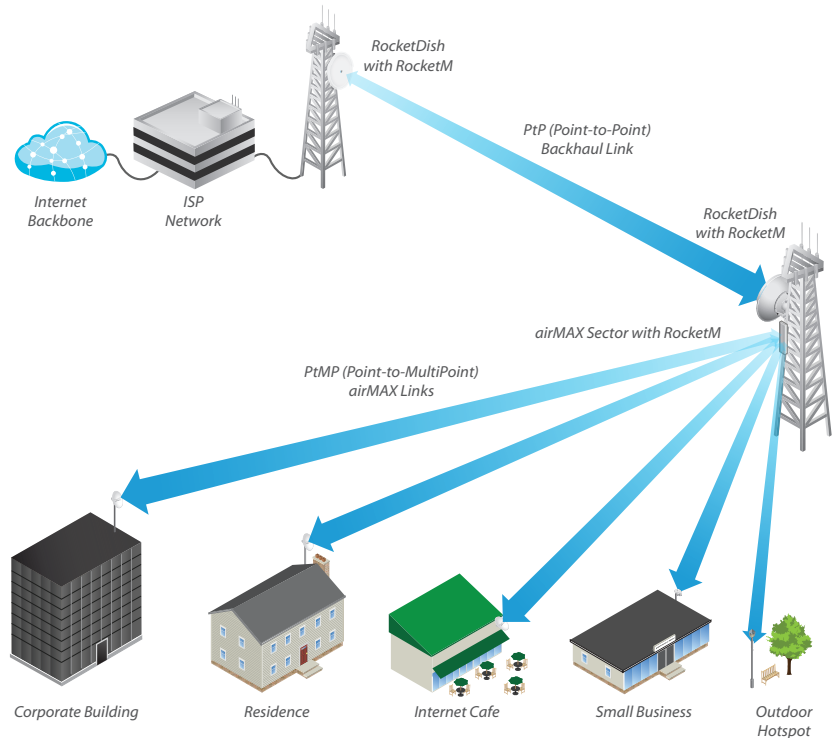
This time slot method eliminates hidden node collisions and maximizes airtime efficiency. It provides many magnitudes of performance improvements in latency, throughput, and scalability compared to all other outdoor systems in its class.

**Intelligent QoS** Priority is given to voice/video for seamless streaming.

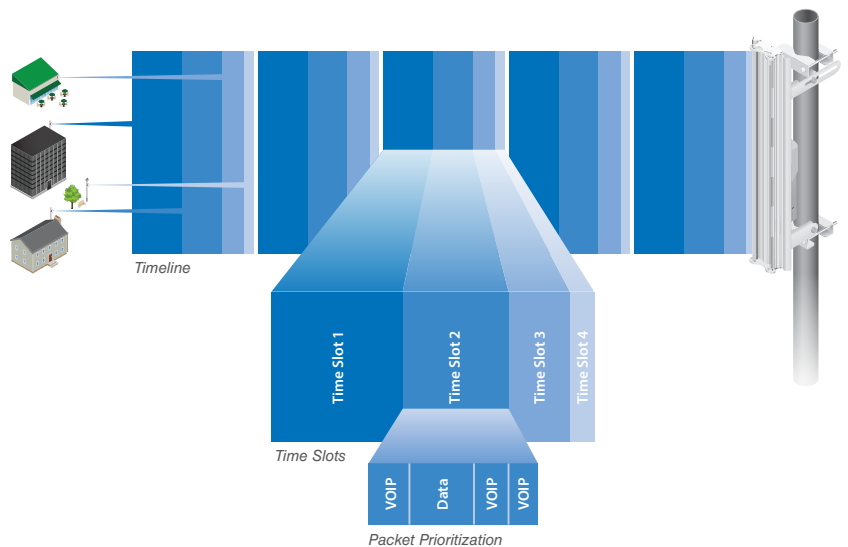
**Scalability** High capacity and scalability.

**Long Distance** Capable of high-speed, carrier-class links.

## Application Example



## airMAX TDMA Technology



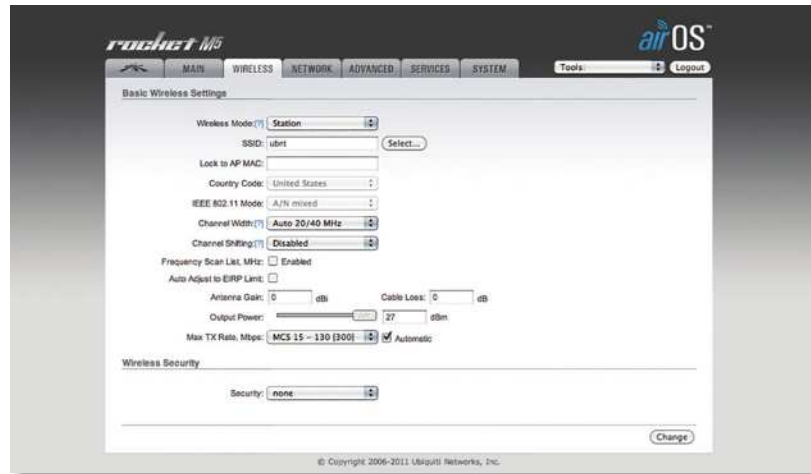
Up to 100 airMAX stations can be connected to an airMAX Sector; four airMAX stations are shown to illustrate the general concept.

# Software

## airOS®

Built upon an intuitive user interface foundation, airOS® 5 is an advanced operating system for Ubiquiti airMAX M Series products.

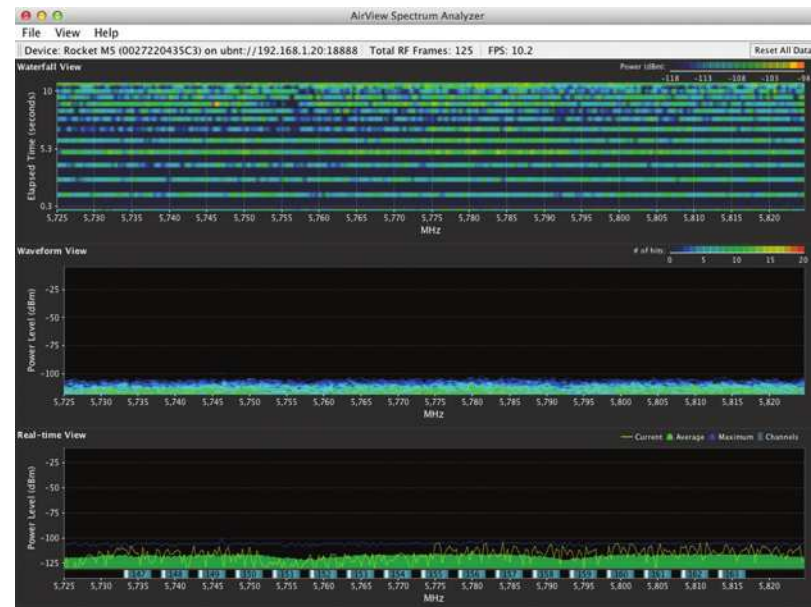
- airMAX Protocol Support
- Long-Range PtP Link Mode
- Transmit Power Control: Automatic/Manual
- Automatic Distance Selection (ACK Timing)
- Device Statistics
- Diagnostic Tools



## airView®

Integrated on all Ubiquiti M products, airView® provides advanced spectrum analyzer functionality: waterfall, waveform, and real-time spectral views allow operators to identify noise signatures and plan their networks to minimize noise interference.

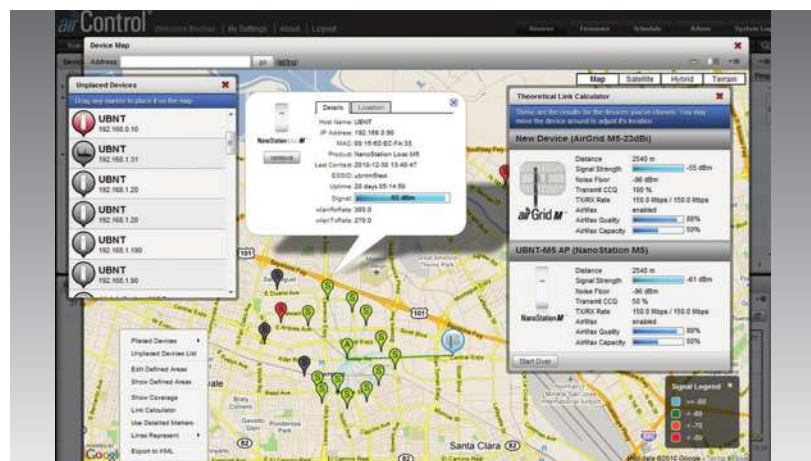
- **Waterfall** Aggregate energy over time for each frequency.
- **Waveform** Aggregate energy collected.
- **Real-time** Energy is shown in real time as a function of frequency.
- **Recording** Automate airView to record and report results.



## airControl®

airControl® is a powerful and intuitive, web-based server network management application, which allows operators to centrally manage entire networks of Ubiquiti devices.

- Network Map
- Monitor Device Status
- Mass Firmware Upgrade
- Web UI Access
- Manage Groups of Devices
- Task Scheduling



## Models

The Rocket enclosure is built to survive harsh environments and fits the Rocket mount built into every airMAX antenna. Pair the Rocket with the appropriate antenna for your PtP link or PtMP network.



### *rocket M5*

The 5 GHz frequency band is free to use, worldwide, offers plentiful spectrum, and works well for long-distance links. However, 5 GHz signals have more difficulty passing through obstacles than lower-frequency signals.



### *rocket M3 / M365*

The 3.65 GHz frequency band is noise-free in most areas; however, its use requires a license. There may be additional restrictions on its use depending on local country regulations.



### *rocket M2*

The 2.4 GHz frequency band is free to use, worldwide; however, it is crowded due to interference from other wireless devices. Also, there are only three non-overlapping, 20 MHz channels available for use.



### *rocket M9*

The 900 MHz frequency band has a higher tolerance for obstacles that may obstruct line of sight; however, noise levels are typically higher. Also, its use may require a license in some parts of the world.

# Antenna Compatibility



RocketM9



RocketM2

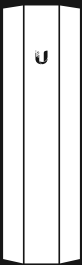
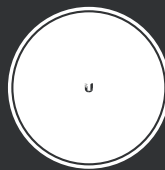

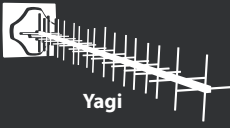


RocketM3  
RocketM365



RocketM5

Frequency Band

	900 MHz	2.4 GHz	3/3.65 GHz	5 GHz
 Sector	AM-9M13	AM-V2G-Ti AM-2G15-120 AM-2G16-90	AM-3G18-120	AM-V5G-Ti AM-M-V5G-Ti AM-5G16-120 AM-5G17-90 AM-5G19-120 AM-5G20-90 AM-5AC21-60 AM-5AC22-45
 Rocket Dish		RD-2G24	RD-3G26	RD-5G31-AC RD-5G30-LW RD-5G30 RD-5G34
 Omni		AMO-2G10 AMO-2G13	AMO-3G12	AMO-5G10 AMO-5G13
 Yagi	AMY-9M16			

# Specifications

*rocket*<sup>®</sup>M5

M5	
Dimensions	160 x 80 x 30 mm (6.30 x 3.15 x 1.18")
Weight	500 g (1.1 lb)
Power Supply	24V, 1A PoE Adapter
Power Method	Passive PoE (Pairs 4, 5+; 7, 8 Return)
Max. Power Consumption	8W
Processor	MIPS 74Kc
Memory	128 MB SDRAM, 8 MB Flash
Networking Interface	(1) 10/100 Mbps
RF Connections	(2) RP-SMA (Waterproof)
LEDs	Power, Ethernet, (4) Signal Strength
Enclosure Characteristics	Outdoor UV Stabilized Plastic
ESD/EMP Protection	± 24KV Air / Contact
Operating Temperature	-30 to 75° C (-22 to 167° F)
Operating Humidity	5 to 95% Noncondensing
Shock and Vibration	ETSI300-019-1.4
Wireless Approvals	FCC, IC, CE
RoHS Compliance	Yes
Modes	Access Point, Station
Services	Web Server, SNMP, SSH Server, Telnet , Ping Watchdog, DHCP, NAT, Bridging, Routing
Utilities	Antenna Alignment Tool, Discovery Utility, Site Survey, Ping, Traceroute, Speed Test
Distance Adjustment	Dynamic Ack and Ackless Mode
Power Adjustment	Software Adjustable UI or CL
Security	WPA2 AES Only
QoS	Supports Packet Level Classification WMM and User Customer Level: High/Medium/Low
Statistical Reporting	Up Time, Packet Errors, Data Rates, Wireless Distance, Ethernet Link Rate
Other	Remote Reset Support, Software Enabled/Disabled, VLAN Support, 64QAM, 5/8/10/20/30/40 MHz Channel Width Support
Ubiquiti Specific Features	airMAX Mode, Traffic Shaping with Burst Support, Discovery Protocol, Frequency Band Offset, Ackless Mode

M5 Operating Frequency (MHz)				
Worldwide	5150 - 5875			
USA	U-NII-1	U-NII-2A	U-NII-2C	U-NII-3
	5150 - 5250*	5250 - 5350*	5470 - 5725*	5725 - 5850*
IC	5470 - 5600, 5650 - 5725, 5725 - 5850			

\* Some frequencies may require activation; visit: <https://www.ubnt.com/fcclabelrequest>

M5 Output Power: 27 dBm							
TX Power Specifications				RX Power Specifications			
Modulation	Data Rate	Avg. TX	Tolerance	Modulation	Data Rate	Sensitivity	Tolerance
802.11a	6 - 24 Mbps	27 dBm	± 2 dB	802.11a	6 - 24 Mbps	-94 dBm Min.	± 2 dB
	36 Mbps	25 dBm	± 2 dB		36 Mbps	-80 dBm	± 2 dB
	48 Mbps	23 dBm	± 2 dB		48 Mbps	-77 dBm	± 2 dB
	54 Mbps	22 dBm	± 2 dB		54 Mbps	-75 dBm	± 2 dB
802.11n/airMAX	MCS0	27 dBm	± 2 dB	802.11n/airMAX	MCS0	-96 dBm	± 2 dB
	MCS1	27 dBm	± 2 dB		MCS1	-95 dBm	± 2 dB
	MCS2	27 dBm	± 2 dB		MCS2	-92 dBm	± 2 dB
	MCS3	27 dBm	± 2 dB		MCS3	-90 dBm	± 2 dB
	MCS4	26 dBm	± 2 dB		MCS4	-86 dBm	± 2 dB
	MCS5	24 dBm	± 2 dB		MCS5	-83 dBm	± 2 dB
	MCS6	22 dBm	± 2 dB		MCS6	-77 dBm	± 2 dB
	MCS7	21 dBm	± 2 dB		MCS7	-74 dBm	± 2 dB
	MCS8	27 dBm	± 2 dB		MCS8	-95 dBm	± 2 dB
	MCS9	27 dBm	± 2 dB		MCS9	-93 dBm	± 2 dB
	MCS10	27 dBm	± 2 dB		MCS10	-90 dBm	± 2 dB
	MCS11	27 dBm	± 2 dB		MCS11	-87 dBm	± 2 dB
	MCS12	26 dBm	± 2 dB		MCS12	-84 dBm	± 2 dB
	MCS13	24 dBm	± 2 dB		MCS13	-79 dBm	± 2 dB
	MCS14	22 dBm	± 2 dB		MCS14	-78 dBm	± 2 dB
MCS15	21 dBm	± 2 dB	MCS15	-75 dBm	± 2 dB		



# Specifications

## *rocket* M3 / M365

M3/M365		
Dimensions	160 x 80 x 30 mm (6.30 x 3.15 x 1.18")	
Weight	500 g (1.1 lb)	
Power Supply	24V, 1A PoE Adapter	
Power Method	Passive PoE (Pairs 4, 5+; 7, 8 Return)	
Max. Power Consumption	6.5W	
Operating Frequency	M3	M365
	3400 - 3730 MHz*	3650 - 3675 MHz
Processor	MIPS 24Kc	
Memory	64 MB SDRAM, 8 MB Flash	
Networking Interface	(1) 10/100 Mbps	
RF Connections	(2) RP-SMA (Waterproof)	
LEDs	Power, Ethernet, (4) Signal Strength	
Enclosure Characteristics	Outdoor UV Stabilized Plastic	
ESD/EMP Protection	± 24KV Air / Contact	
Operating Temperature	-30 to 75° C (-22 to 167° F)	
Operating Humidity	5 to 95% Noncondensing	
Shock and Vibration	ETSI300-019-1.4	
Wireless Approvals	M3	M365
	FCC, IC, CE	FCC Part 90Y
RoHS Compliance	Yes	
Modes	Access Point, Station	
Services	Web Server, SNMP, SSH Server, Telnet , Ping Watchdog, DHCP, NAT, Bridging, Routing	
Utilities	Antenna Alignment Tool, Discovery Utility, Site Survey, Ping, Traceroute, Speed Test	
Distance Adjustment	Dynamic Ack and Ackless Mode	
Power Adjustment	Software Adjustable UI or CL	
Security	WPA2 AES Only	
QoS	Supports Packet Level Classification WMM and User Customer Level: High/Medium/Low	
Statistical Reporting	Up Time, Packet Errors, Data Rates, Wireless Distance, Ethernet Link Rate	
Other	M3	M365
	Remote Reset Support, Software Enabled/Disabled, VLAN Support, 64QAM, 5/8/10/20/25/40 MHz Channel Width Support	Remote Reset Support, Software Enabled/Disabled, VLAN Support, 64QAM, 5/10/20/25 MHz Channel Width Support
Ubiquiti Specific Features	airMAX Mode, Traffic Shaping with Burst Support, Discovery Protocol, Frequency Band Offset, Ackless Mode	

\* RocketM3 not supported in the USA



M3/M365 Output Power: 25 dBm							
TX Power Specifications				RX Power Specifications			
Modulation	Data Rate	Avg. TX	Tolerance	Modulation	Data Rate	Sensitivity	Tolerance
airMAX	MCS0	25 dBm	± 2 dB	airMAX	MCS0	-94 dBm Min.	± 2 dB
	MCS1	25 dBm	± 2 dB		MCS1	-93 dBm	± 2 dB
	MCS2	25 dBm	± 2 dB		MCS2	-90 dBm	± 2 dB
	MCS3	25 dBm	± 2 dB		MCS3	-89 dBm	± 2 dB
	MCS4	24 dBm	± 2 dB		MCS4	-86 dBm	± 2 dB
	MCS5	23 dBm	± 2 dB		MCS5	-83 dBm	± 2 dB
	MCS6	22 dBm	± 2 dB		MCS6	-77 dBm	± 2 dB
	MCS7	20 dBm	± 2 dB		MCS7	-74 dBm	± 2 dB
	MCS8	25 dBm	± 2 dB		MCS8	-93 dBm	± 2 dB
	MCS9	25 dBm	± 2 dB		MCS9	-91 dBm	± 2 dB
	MCS10	25 dBm	± 2 dB		MCS10	-89 dBm	± 2 dB
	MCS11	25 dBm	± 2 dB		MCS11	-87 dBm	± 2 dB
	MCS12	24 dBm	± 2 dB		MCS12	-84 dBm	± 2 dB
	MCS13	23 dBm	± 2 dB		MCS13	-79 dBm	± 2 dB
	MCS14	22 dBm	± 2 dB		MCS14	-78 dBm	± 2 dB
MCS15	20 dBm	± 2 dB	MCS15	-75 dBm	± 2 dB		



3 GHz



3.65 GHz



25 dBm



10/100

# Specifications

## *rocket*<sup>®</sup>M2

M2	
Dimensions	160 x 80 x 30 mm (6.30 x 3.15 x 1.18")
Weight	500 g (1.1 lb)
Power Supply	24V, 1A PoE Adapter
Power Method	Passive PoE (Pairs 4, 5+; 7, 8 Return)
Max. Power Consumption	6.5W
Operating Frequency	2402 - 2462 MHz
Processor	MIPS 24Kc
Memory	128 MB SDRAM, 8 MB Flash
Networking Interface	(1) 10/100 Mbps
RF Connections	(2) RP-SMA (Waterproof)
LEDs	Power, Ethernet, (4) Signal Strength
Enclosure Characteristics	Outdoor UV Stabilized Plastic
ESD/EMP Protection	± 24KV Air / Contact
Operating Temperature	-30 to 75° C (-22 to 167° F)
Operating Humidity	5 to 95% Noncondensing
Shock and Vibration	ETSI300-019-1.4
Wireless Approvals	FCC, IC, CE
RoHS Compliance	Yes
Modes	Access Point, Station
Services	Web Server, SNMP, SSH Server, Telnet , Ping Watchdog, DHCP, NAT, Bridging, Routing
Utilities	Antenna Alignment Tool, Discovery Utility, Site Survey, Ping, Traceroute, Speed Test
Distance Adjustment	Dynamic Ack and Ackless Mode
Power Adjustment	Software Adjustable UI or CL
Security	WPA2 AES Only
QoS	Supports Packet Level Classification WMM and User Customer Level: High/Medium/Low
Statistical Reporting	Up Time, Packet Errors, Data Rates, Wireless Distance, Ethernet Link Rate
Other	Remote Reset Support, Software Enabled/Disabled, VLAN Support, 64QAM, 5/8/10/20/30/40 MHz Channel Width Support
Ubiquiti Specific Features	airMAX Mode, Traffic Shaping with Burst Support, Discovery Protocol, Frequency Band Offset, Ackless Mode

M2 Output Power: 28 dBm							
TX Power Specifications				RX Power Specifications			
Modulation	Data Rate	Avg. TX	Tolerance	Modulation	Data Rate	Sensitivity	Tolerance
802.11g	6 - 24 Mbps	28 dBm	± 2 dB	802.11g	6 - 24 Mbps	-97 dBm Min.	± 2 dB
	36 Mbps	26 dBm	± 2 dB		36 Mbps	-80 dBm	± 2 dB
	48 Mbps	25 dBm	± 2 dB		48 Mbps	-77 dBm	± 2 dB
	54 Mbps	24 dBm	± 2 dB		54 Mbps	-75 dBm	± 2 dB
802.11n/airMAX	MCS0	28 dBm	± 2 dB	802.11n/airMAX	MCS0	-96 dBm	± 2 dB
	MCS1	28 dBm	± 2 dB		MCS1	-95 dBm	± 2 dB
	MCS2	28 dBm	± 2 dB		MCS2	-92 dBm	± 2 dB
	MCS3	28 dBm	± 2 dB		MCS3	-90 dBm	± 2 dB
	MCS4	27 dBm	± 2 dB		MCS4	-86 dBm	± 2 dB
	MCS5	25 dBm	± 2 dB		MCS5	-83 dBm	± 2 dB
	MCS6	23 dBm	± 2 dB		MCS6	-77 dBm	± 2 dB
	MCS7	22 dBm	± 2 dB		MCS7	-74 dBm	± 2 dB
	MCS8	28 dBm	± 2 dB		MCS8	-95 dBm	± 2 dB
	MCS9	28 dBm	± 2 dB		MCS9	-93 dBm	± 2 dB
	MCS10	28 dBm	± 2 dB		MCS10	-90 dBm	± 2 dB
	MCS11	28 dBm	± 2 dB		MCS11	-87 dBm	± 2 dB
	MCS12	27 dBm	± 2 dB		MCS12	-84 dBm	± 2 dB
	MCS13	25 dBm	± 2 dB		MCS13	-79 dBm	± 2 dB
	MCS14	23 dBm	± 2 dB		MCS14	-78 dBm	± 2 dB
MCS15	22 dBm	± 2 dB	MCS15	-75 dBm	± 2 dB		



# Specifications

*rocket*<sup>®</sup>M9

M900	
Dimensions	160 x 80 x 30 mm (6.30 x 3.15 x 1.18")
Weight	500 g (1.1 lb)
Power Supply	24V, 1A PoE Adapter
Power Method	Passive PoE (Pairs 4, 5+; 7, 8 Return)
Max. Power Consumption	6.5W
Operating Frequency	902 - 928 MHz
Processor	MIPS 24Kc
Memory	64 MB SDRAM, 8 MB Flash
Networking Interface	(1) 10/100 Mbps
RF Connections	(2) RP-SMA (Waterproof)
LEDs	Power, Ethernet, (4) Signal Strength
Enclosure Characteristics	Outdoor UV Stabilized Plastic
ESD/EMP Protection	± 24KV Air / Contact
Operating Temperature	-30 to 75° C (-22 to 167° F)
Operating Humidity	5 to 95% Noncondensing
Shock and Vibration	ETSI300-019-1.4
Wireless Approvals	FCC, IC, CE
RoHS Compliance	Yes
Modes	Access Point, Station
Services	Web Server, SNMP, SSH Server, Telnet , Ping Watchdog, DHCP, NAT, Bridging, Routing
Utilities	Antenna Alignment Tool, Discovery Utility, Site Survey, Ping, Traceroute, Speed Test
Distance Adjustment	Dynamic Ack and Ackless Mode
Power Adjustment	Software Adjustable UI or CL
Security	WPA2 AES Only
QoS	Supports Packet Level Classification WMM and User Customer Level: High/Medium/Low
Statistical Reporting	Up Time, Packet Errors, Data Rates, Wireless Distance, Ethernet Link Rate
Other	Remote Reset Support, Software Enabled/Disabled, VLAN Support, 64QAM, 3/5/8/10/20 MHz Channel Width Support
Ubiquiti Specific Features	airMAX Mode, Traffic Shaping with Burst Support, Discovery Protocol, Frequency Band Offset, Ackless Mode

M900 Output Power: 28 dBm							
TX Power Specifications				RX Power Specifications			
Modulation	Data Rate	Avg. TX	Tolerance	Modulation	Data Rate	Sensitivity	Tolerance
airMAX	MCS0	28 dBm	± 2 dB	airMAX	MCS0	-96 dBm	± 2 dB
	MCS1	28 dBm	± 2 dB		MCS1	-95 dBm	± 2 dB
	MCS2	28 dBm	± 2 dB		MCS2	-92 dBm	± 2 dB
	MCS3	28 dBm	± 2 dB		MCS3	-90 dBm	± 2 dB
	MCS4	28 dBm	± 2 dB		MCS4	-86 dBm	± 2 dB
	MCS5	24 dBm	± 2 dB		MCS5	-83 dBm	± 2 dB
	MCS6	22 dBm	± 2 dB		MCS6	-77 dBm	± 2 dB
	MCS7	21 dBm	± 2 dB		MCS7	-74 dBm	± 2 dB
	MCS8	28 dBm	± 2 dB		MCS8	-95 dBm	± 2 dB
	MCS9	28 dBm	± 2 dB		MCS9	-93 dBm	± 2 dB
	MCS10	28 dBm	± 2 dB		MCS10	-90 dBm	± 2 dB
	MCS11	28 dBm	± 2 dB		MCS11	-87 dBm	± 2 dB
	MCS12	28 dBm	± 2 dB		MCS12	-84 dBm	± 2 dB
	MCS13	24 dBm	± 2 dB		MCS13	-79 dBm	± 2 dB
	MCS14	22 dBm	± 2 dB		MCS14	-78 dBm	± 2 dB
MCS15	21 dBm	± 2 dB	MCS15	-75 dBm	± 2 dB		



Specifications are subject to change. Ubiquiti products are sold with a limited warranty described at: [www.ui.com/support/warranty](http://www.ui.com/support/warranty). The limited warranty requires the use of arbitration to resolve disputes on an individual basis, and, where applicable, specify arbitration instead of jury trials or class actions. ©2011-2020 Ubiquiti Inc. All rights reserved. Ubiquiti, Ubiquiti Networks, the Ubiquiti U logo, the Ubiquiti beam logo, airControl, airMAX, airOS, airView, Rocket, and RocketDish are trademarks or registered trademarks of Ubiquiti Inc. in the United States and in other countries. All other trademarks are the property of their respective owners.

