

UniFi® CLOUD KEY GEN2

Hybrid Cloud Key Technology
with Integrated Application Server

Model: UCK-G2

Fully Integrated, Stand-Alone UniFi® Controller

Multi-Site Network Management

Remote, Private Cloud Access to UniFi Network



UniFi® CLOUD KEY GEN2

UniFi Controller with Hybrid Cloud

The UniFi Cloud Key Gen2 is an integrated hardware controller and self-contained application server designed to help you monitor and manage your UniFi network devices. It features an eight-core processor with 2 GB RAM and 32 GB eMMC flash storage, and utilizes the latest version of the UniFi Controller with hybrid cloud technology.

Breakthrough Efficiency

The UniFi Cloud Key Gen2 is fully capable of configuring and managing dozens of UniFi devices on your network, and offers an ultra-low energy PoE replacement for a dedicated server or computer, leaving behind no digital footprint.

Hybrid Cloud Technology

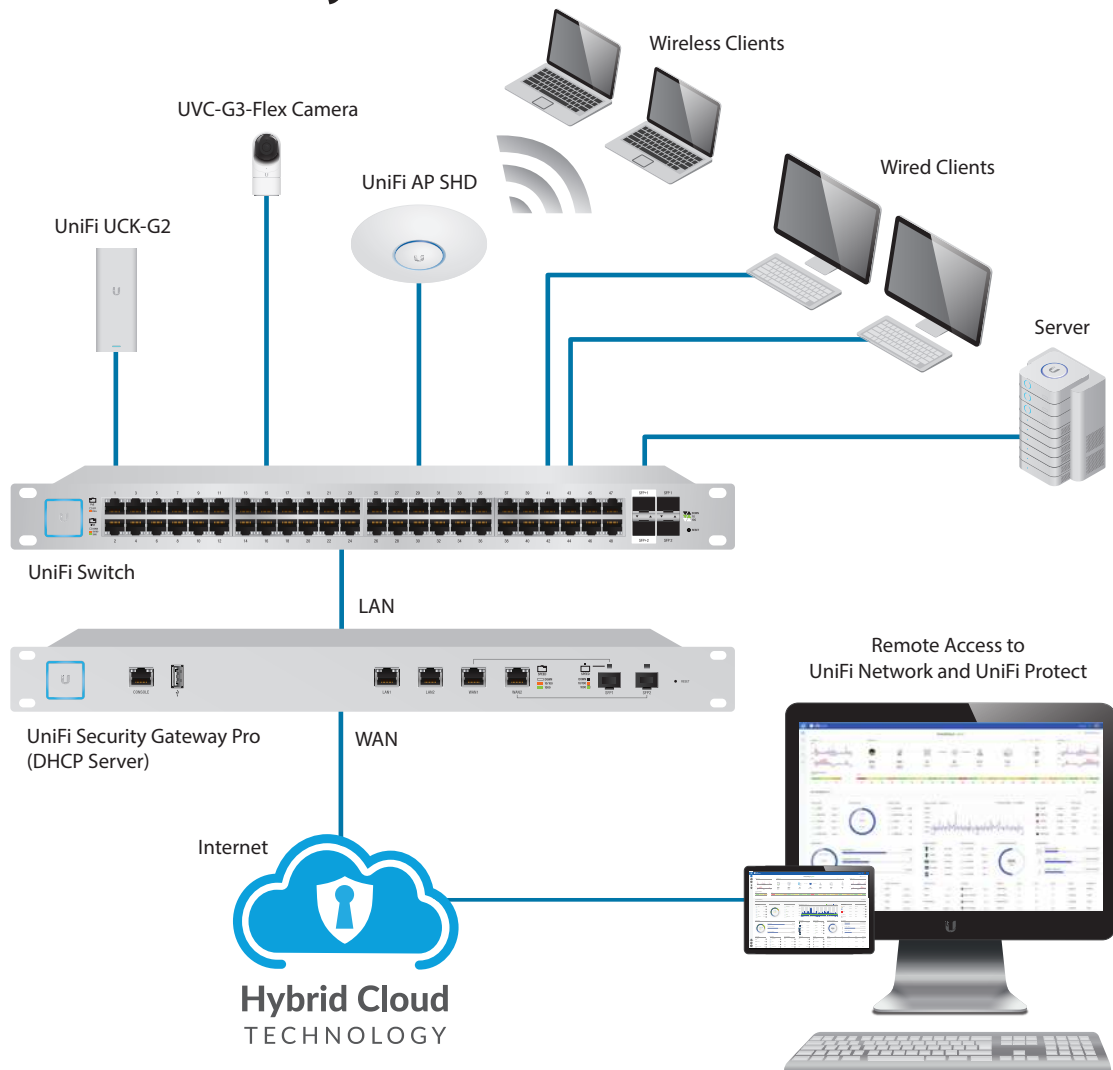
The Ubiquiti® hybrid cloud configuration provides a secure, private SSO (Single Sign-On) to access all of your UniFi deployments from anywhere in the world. With the Ubiquiti hybrid cloud, a third-party hosted cloud service is not required, so all of your personal data and network information remains local and secure—the way it should be.

Incredible, Agile Scalability

Add, provision, configure, monitor, and manage all of your UniFi devices, whether in one or hundreds of private networks—all from a centralized control panel.

Easily accessible through one of our downloadable apps or a standard web browser (Chrome recommended), the UniFi Cloud Key Gen2 is a powerful solution for managing your UniFi networks across the campus or across the globe.

UniFi Network System



UniFi Network

Designed for convenient management, the UniFi Network Controller software allows admins to configure and monitor UniFi devices using a graphical user interface. There are no separate software, licensing, hosting, or support fees.

Multi-Site Management

A UniFi Cloud Key Gen2 installed at each deployment site provides an always-on, private UniFi cloud service. Every site is accessible through its assigned secure SSO. Each Cloud Key Gen2 is independent with its own network monitoring, configuration, maps, statistics, and admin accounts.

Improved User Experience

Redesigned to be more intuitive and easier to navigate, the new UI raises the bar for enterprise network management efficiency. Important network details are logically organized for a simplified, yet powerful, interface.

Network Overview

A comprehensive overview of your network health is readily available in the new dashboard. Monitor your network's vitals and make on-the-fly adjustments as needed.

Detailed Analytics

Use the configurable reporting and analytics to monitor large user groups and expedite troubleshooting.

LAN/WLAN Groups

The UniFi Network Controller can manage flexible configurations of large deployments. Create multiple LAN and WLAN groups and assign them to the respective UniFi devices.

Wi-Fi Management

Use the UniFi Network Controller to provision UniFi APs, configure wireless networks, map out networks, and quickly manage system traffic. Powerful Wi-Fi management features include:

- RF monitoring and device mapping
- Detailed RF performance analysis
- Band steering support
- Guest portal/hotspot support

Router and Switch Management

Use the UniFi Controller to provision UniFi Security Gateways and Switches. Configure a variety of features:

- WAN/LAN/VLAN configuration
- Operation mode (switching, mirroring, or aggregate) per port
- PoE setting per port (device dependent)
- Jumbo frame and flow control services
- Monitor and analyze performance of each port

Dashboard

UniFi provides a visual representation of your network's status and delivers basic information about each network segment.



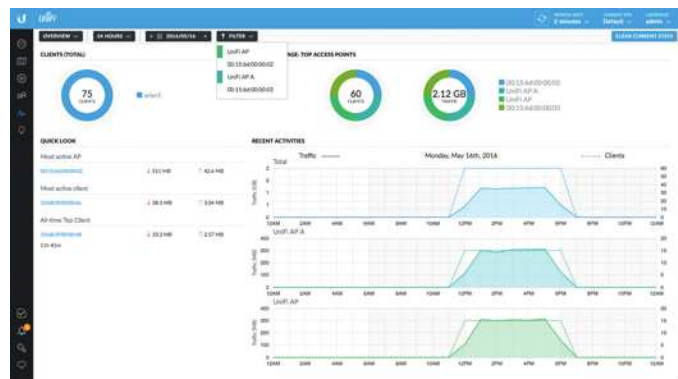
UniFi Mobile App

The downloadable app provides free remote cloud access to your UniFi Controller. It also allows you to analyze and manage the health and traffic of your UniFi network from anywhere in the world using your single-signon Ubiquiti account.



Statistics

The *Statistics* tab provides a visual representation of the network clients and network traffic carried by your managed UniFi Switches and APs.



Controller Sections

Icon	Description
	The <i>Dashboard</i> screen provides a visual overview of your network's status, including latency and throughput information for each client and device.
	The <i>Statistics</i> screen provides a visual representation of the clients and network traffic on your managed UniFi network.
	The <i>Map</i> section allows you to create maps (either upload custom images of your location(s) or use Google Maps™) for a visual representation of your UniFi network and also view your system topology.
	The <i>Devices</i> screen displays a list of UniFi devices managed by your UniFi Network controller.
	The <i>Clients</i> screen displays a list of clients connected to UniFi devices managed by your UniFi Network controller.
	The <i>Insights</i> screen lists detailed information about local and surrounding wireless networks, client and device statistics, security and connection detail, and other controller access information.
	The <i>Release Notes</i> window provides information and details on the incorporated changes and/or updates to the latest UniFi Network controller software.
	The <i>Events</i> screen provides a list of all events and activity taking place on your network, including errors and warnings.
	The <i>Alerts</i> window provides a list of alerts and events occurring on your network.
	The <i>Settings</i> screen provides detailed information about your UniFi Network controller and allows you to add/change/update the site configuration.
	The <i>Live Chat Support</i> screen provides access to a UniFi professional support representative available via live chat 24/7.

Rackmount Accessory

Now you can mount the Cloud Key Gen2 in a standard 19" rack, along with other UniFi switches and network devices. Sold separately, the optional Rackmount Accessory, model CKG2-RM, features a docking bay for the Cloud Key Gen2 and an alternate Ethernet port¹ for power and network connectivity.

The *Docking Bay* is also designed to house the Cloud Key Gen2 Plus model, UCK-G2-PLUS. Simply press the *Locking Tab* on the back of the Rackmount Accessory and adjust the size of the *Docking Bay*.



CKG2-RM with UCK-G2- installed

¹ To prevent creating a loop or other unfavorable behavior on the network, only one Ethernet connection should be used. Do not use the Ethernet port on the Cloud Key Gen2 and the Rackmount Accessory simultaneously

Specifications

UCK-G2	
Dimensions	27.10 x 46.80 x 119.75 mm (1.07 x 1.84 x 4.71")
Weight	150 g (5.29 oz)
Enclosure	Anodized Aluminum
Processor	APQ8053 with 2 GB RAM
eMMC Memory	32 GB
Management Interface	UniFi App; UniFi Network Interface
Networking Interface	(1) 10/100/1000 Ethernet Port
Configuration Interface	BlueTooth LE with Ubiquiti Mobile Applications Web browser
Buttons	(1) Power; (1) Reset
LEDs	(1) Power, White/Blue
Power Method	Standard 802.3 af PoE, DC 5V 1A Powered
Supported Voltage Range	Standard 802.3 af PoE, DC 5V 1A
Max. Power Consumption	5W (PoE/Adapter)
Operating Temperature	0 to 35° C (32 to 95° F)
Operating Humidity	20 to 80% Noncondensing
Certifications	CE, FCC, IC



©2019 Specifications are subject to change. Ubiquiti products are sold with a limited warranty described at: ui.com/support/warranty Ubiquiti Networks, Inc. All rights reserved. Ubiquiti, the Ubiquiti U logo, the Ubiquiti beam logo, TOUGH Cable, UniFi, and UniFi Protect are trademarks or registered trademarks of Ubiquiti Networks, Inc. in the United States and in other countries. Apple and the Apple logo are trademarks of Apple Inc., registered in the U.S. and other countries. App Store is a service mark of Apple Inc., registered in the U.S. and other countries. Android, Google, Google Play, the Google Play logo and other marks are trademarks of Google Inc. All other trademarks are the property of their respective owners.

